

# On The Disk...

*A run-down of what's included on the free disk with this issue*

**S**ubscribers to *The Delphi Magazine* receive a free disk with each copy, packed with goodies. This includes the source code and example files for all the articles in the current issue.

But, there's much more too! We've sifted through a great many tools, components and other Delphi add-ons to bring you some of the best shareware and freeware material available, as outlined below.

➤ **AS400**

Sample component from a set (available for purchase from Gerald Ltd) which demonstrates direct access to IBM AS400.

➤ **CTOP**

Shareware C to Pascal converter from Knowledge Software Ltd.

➤ **DBFIL14**

Freeware component for easy database filtering, written by Uli Zindler.

➤ **DBPLUS2**

Database lookup combobox component from Out & About Productions: greatly enhanced over the basic Delphi version, with sorting, searching, autofill, drop down or rise up, left/right justified text, and more.

➤ **EZDSL100**

Easy classical data structures for Delphi, by Julian Bucknall. A great set of objects for stacks, queues, lists, trees etc.

➤ **GLYPHPRO**

Tool for managing large numbers of glyph images, written in Delphi with full source supplied.

➤ **HEADCONV**

Dr.Bob's C DLL Header Converter Expert, shareware version. Get your C DLLs working with Delphi in double-quick time!

➤ **KSCAL**

Flexible and powerful calendar component from Kinetic Software (see screenshot right).

➤ **PERSEUS**

Set of four components from Sebastian Modersohn: Wheel and Slider controls, PSLabel for snazzy text, including rotated text, and a Virtual List Box for displaying up to 2 billion items (see the screenshot right).

➤ **QUICKREP**

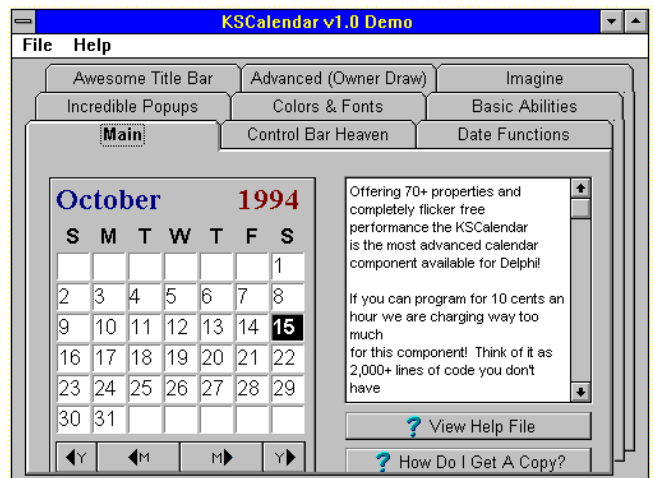
Set of components from Allan Lochert to make the development of printed reports in Delphi as easy as possible. Reports are designed visually in Delphi as forms and may be previewed on screen as well as printed out.

➤ **TMAPI**

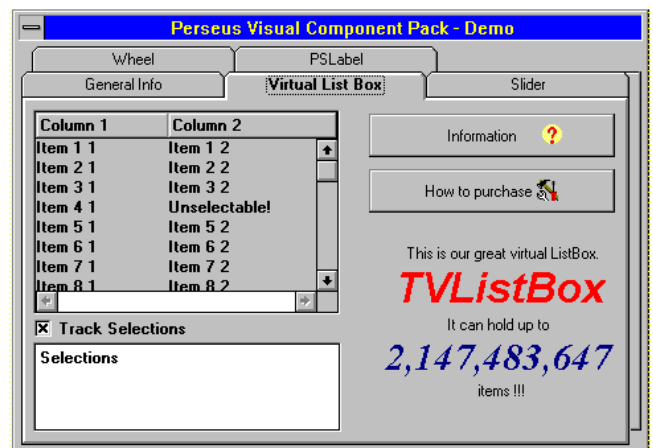
Component to allow access to Microsoft Mail.

➤ **USERGPS**

List and contact information for Delphi User Groups.



➤ *Demo of the KSCalendar component*



➤ *The Perseus virtual listbox component*

➤ **VALID**

Validation component for shareware component writers.

**Important Note!**

Always, but *always* make a backup copy of your COMPLIB.DCL file (located in directory delphi\bin) *before* installing *any* new component into Delphi! Sometimes installation might trash your COMPLIB.DCL and you will then be left with an inoperative Delphi and (after copying the default file over from the distribution CD-ROM/floppies) will have to re-add *all* your favourite extra components. You have been warned!

**Send In Your Code...**

If you have some carefully crafted routines which you think may be of use to others, why not send them in by mail or (zipped) by CompuServe email (to 70630,717) so we can consider them for a future free disk?